

Assistive Technology Partnership (ATP)

Tobias Orr – Director

Angie Ransom – Resource Specialist

May Faith – Program Supervisor

www.atp.nebraska.gov





What is Assistive Technology (AT)?

- AT is equipment or a system used by a person to perform functions that might otherwise be difficult or impossible.
- AT that works for one person may not be a good solution for someone else. It is very individualized and can take trial and error to find a good match.
- We use AT everyday in our lives when we use our smart phone for reminders or create a checklist of tasks to complete. AT can benefit everyone!

Low, Mid and High-Tech AT

- **Low-tech can include:**

- checklists
- visual schedulers
- pencil grips

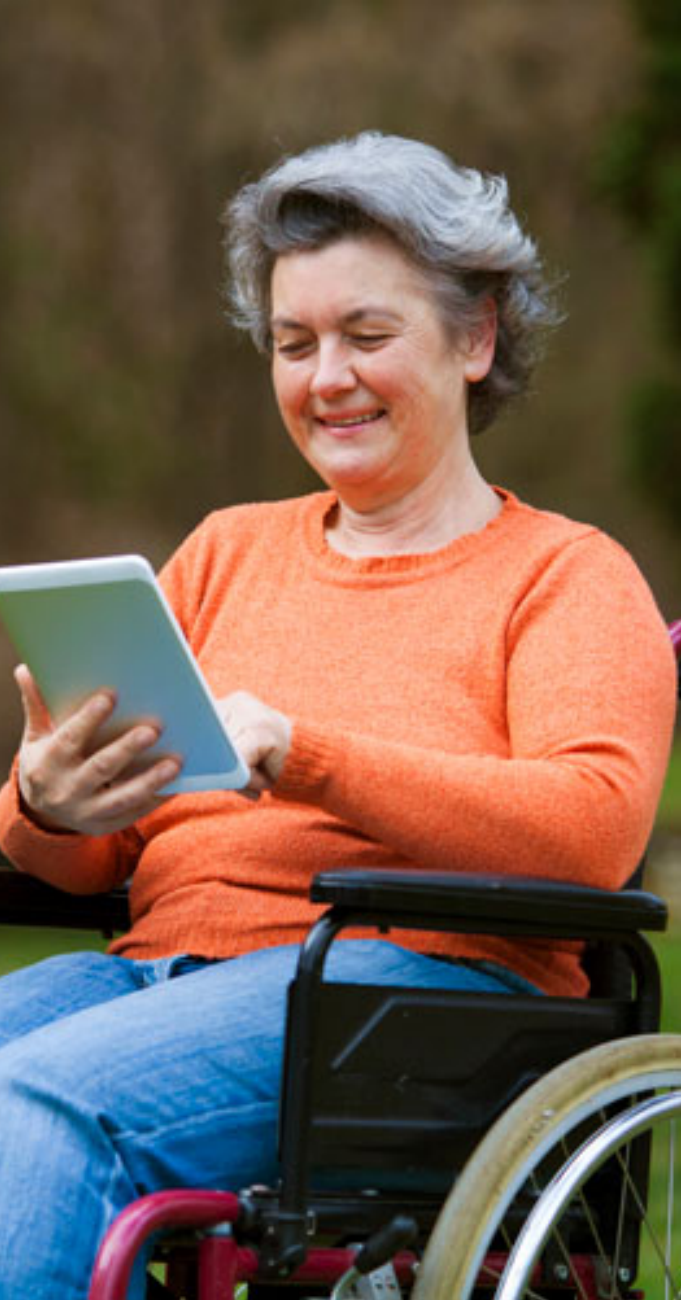
- **Mid-tech can include:**

- reading pen
- alarm clock/bed shaker
- WatchMinder

- **High-tech can include:**

- vertical platform lifts
- computer/software/apps
- vehicle modifications





ATP Services

Assistive Technology Partnership (ATP) is the state AT program and collaborates with other agencies to provide all Nebraskans access and increase independence at home, work, school and in the community.

Locations all over the state- Omaha, Lincoln, Kearney, Columbus, Scottsbluff

Multiple partnerships (HHS, Nebraska VR, NDE Special Education)

Process for AD Waiver and DD Waiver



- Referral form completed online by Services Coordinator
 - <https://atp.nebraska.gov/services/home/service-coordinators>

Nebraska Assistive Technology Partnership

ATP

Service Coordinator Referral Form

Consumer Information

This form is only for referrals by authorized representatives of the Aged and Disabled Waiver and Developmental Disabilities Programs.

Consumer Name *

Process for AD Waiver and DD Waiver cont.

- Referral assigned to a Technology Specialist
- Technology Specialist meets with consumer
- Plans/recommendations drawn up and approved by consumer
- Project is sent out for bids to approved contractors



Process for AD Waiver and DD Waiver cont.

- Project submitted for funding consideration
- Project authorized to a contractor/vendor
- Once work is complete or AT is received the technology specialist inspects the work/product with the consumer
- Technology Specialist provides training as needed

Vehicle Modifications



Tourney Seat

Rear Entry Ramp



Hand Controls

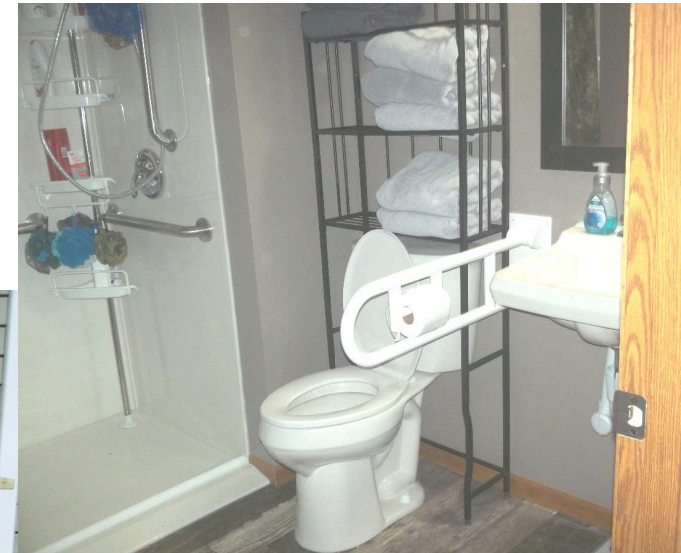
Home Modifications

- Modifications to a home to make it more accessible



Vertical Platform Lift

Entrance Ramp



Roll in Shower,
Roll under sink,
and Flip up Grab Bar

Resource Coordination Services

- A Service and Device application can be found on our ATP website www.atp.nebraska.gov
- This application compiles the individual's information as well as the specific request for funding.
- The Service and Device Application can be completed electronically and submitted.
- A resource letter will be sent to each applicant with specific contact information listed for loans, grants and other possible agency referrals.



AT4ALL

Visit ATP's www.at4all.com to create a free account and find equipment listings for:

- Demonstrations and short-term loans
- Used equipment for sale
- Free donated items
- List your own items to sell and/or donate





Reuse

Do you need equipment or have equipment to donate?



You can search www.at4all.com for equipment that was donated to ATP and is available for free or reach out to ATP staff to donate any equipment in good working condition you are no longer needing.

Questions? Thank you!



Angie Ransom – angie.ransom@Nebraska.gov